

MyeBoard User's Guide



Table of Contents

1. MyeBoard Installation.....	3
1. MyeBoard Introduction.....	3
2. MyeBoard System Requirements and Included Contents	3
(1) System Requirements.....	3
(2) Included Contents	4
3. MyeBoard Installation	4
(1) MyeBoard Installation	4
4. MyeBoard Uninstallation	4
(1) MyeBoard Uninstallation	4
2. MyeBoard Menu	5
1. Using MyeBoard	5
(1) Starting MyeBoard	5
(2) Switching to Board mode.....	5
(3) Moving of Menu Bar.....	6
(4) 'Auto hide / Always Top' Option.....	6
2. Features, organized by Menu.....	6
(1) MyeBoard's Sub Menu	6
(2) MyeBoard's Main Menu	7
(3) MyeBoard's tool Box.....	7
(4) MyeBoard's Color and thickness control menu	9
(5) Moving/Adding/Removing Board page.....	9
(6) Miscellaneous Menu.....	10

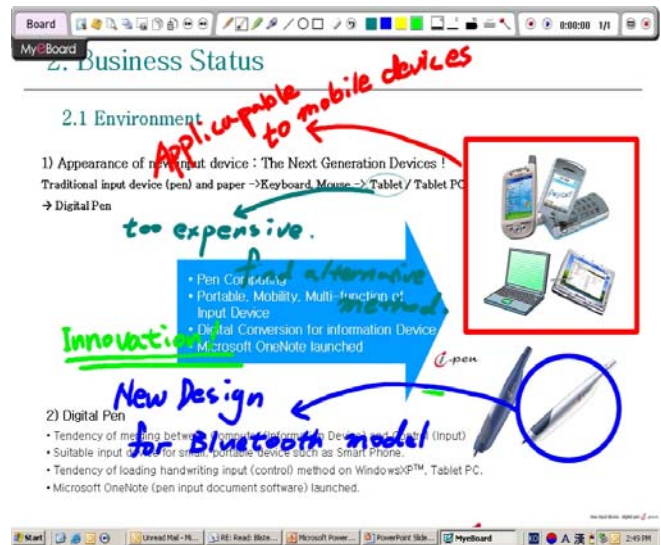
1. MyeBoard Installation

1. MyeBoard Introduction

MyeBoard allows interaction with computer programs via use of Touch screen monitor or Tablet Monitor

The main features of MyeBoard are as follows.

- ⇒ Notation can be made for clarification/explanation without any limitations on a computer screen. The notations can be recorded along with audio.
- ⇒ Notation can be made using the base program as the background, programs such as Powerpoint, Word, Excel and Internet Site.
- ⇒ Provides realistic writing style as per use on the white/black board. Various colors can be used for distinguishing or emphasizing.



MyeBoard fully utilizes the existing electronic display devices (such as projector and projection TV).

2. MyeBoard System Requirements and Included Components

(1) System Requirements

MS Windows 98/Me/2000/XP

Min. Intel Pentium II (333MHz), Recommended Pentium III (500MHz) or better

Min 64MB RAM, Recommended 128MB RAM plus

1024×768 (min 16bit high color)

(2) Product Components

Installation CD : 1 EA

3. MyeBoard Installation

(1) MyeBoard Installation

1. Click the setup.exe from the installation CD.
2. Upon reviewing licensing agreement, click 'Y' to continue.
3. Enter the user information and the serial number, and then click 'Next' to continue.
4. Select the target directory for the program to be installed, and then click 'Next' to continue.
5. To complete the installation click the 'Finish' button.

4. MyeBoard Uninstallation

(1) MyeBoard Uninstallation

1. Open the Add/Remove program from the control Panel.
2. Select MyeBoard, then click 'Add/Remove' button.
3. Click the 'OK' button to remove the program.

2. MyeBoard Menu

1. Using MyeBoard

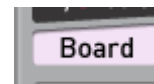
(1) Starting MyeBoard

Select Start → Program → MyeBoard to start the program.

(2) Switching to Board mode

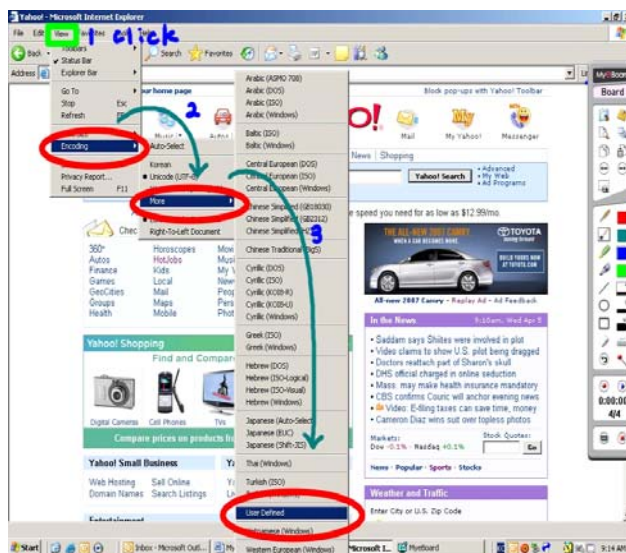
1. Switching via pen selection – At anytime, Windows can be changed to board mode by clicking on the pen icon.

2. Mode Switch Button – The mode switch button allows you to show current status/mode. The switching between board and windows mode is just a click of a button (toggle switch).



3. Differences between Pen Selection and Mode Switch Button – When the pen is selected, MyeBoard captures the current screen with notation functions. When the mode switch button is selected and if there is no active program, a new page will be added. If there is an active program, the screen will be captured to a board mode with notation capability.

4. The screen can be captured using the Print Screen key on the keyboard. Once it has been captured, the screen can be copied to the Board mode for further notations.



(3) Moving of Menu Bar

By clicking on the  icon the location of the menu bar can easily be relocated.

(4) 'Auto hide / Always Top' Option

When you right-click on the surrounding space of the icons of the menu bar, the option menu will be displayed.



2. Features, organized by Menu

(1) MyeBoard's Sub Menu



1. New

Create new board for MyeBoard.

2. Print

Print pages stored in board pages.

3. Print Setup

Define the print style of the board pages (Normal, Note format, page layout)

4. Environment Setup

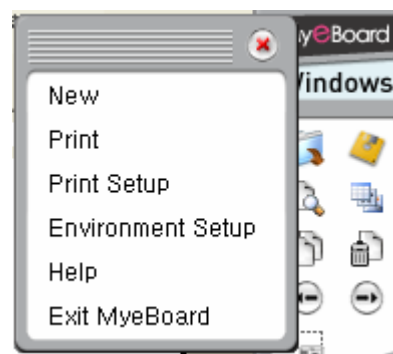
- ≡ Auto Execution : Run MyeBoard when window starts.
- ≡ Product Information : Displays MyeBoard product information.
- ≡ Menu Location : Set the menu bar location upon starting MyeBoard.

5. Help

Start help menu for MyeBoard (Acrobat Reader is required).

6. Exit MyeBoard

Exit MyeBoard program.



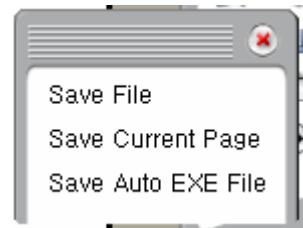
(2) MyeBoard's Main Menu

1. Open

Open existing recorded/saved file (*.meb format).

2. Save

- ☐ Save File : Save the board pages in MyeBoard format (meb file).
- ☐ Save Current Page : Save the current page in **bmp** format.
- ☐ If the file is saved in a picture (**bmp**) format, the file can not be edited.
- ☐ Save as Auto Execute File : The contents of the board will be saved as a recorded executable file. This file can be viewed without the installation of MyeBoard.

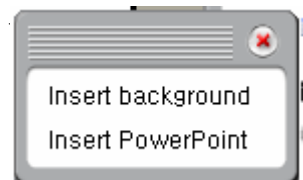


3. Preview

The page stored in Board mode can be previewed. A title page or other new/existing pages can be added or removed.

4. Background

- ☐ Insert Background : Various predefined background such as Board, Note, lined paper, graphics or images (**jpg, gif or bmp file**) can be used to set the background.
- ☐ Insert PowerPoint : The existing Powerpoint file can be used as a background.




5. Section Capture

A section of the window can be captured. The section size and selection is adjustable.

(3) MyeBoard's Tool Box

1. Normal

Normal pen emulates use of a ball point pen.


2. Brush 

The thickness of pen can be adjusted by the pressure of the pen and it emulates the oriental brush pen. This pen style provides realistic handwriting.

☞ In order to fully utilize this function, related hardware must be used (with pressure recognition pen).

3. Highlighter 

Functions just as normal highlighter. Pastel colors highlights the existing text.

4. Marker 

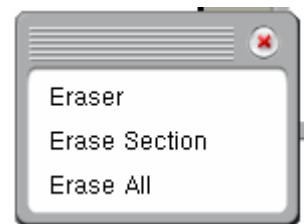
The tip of the marker can be used as typical markers.

5. Draw 

- ☞ Line : Used to draw a straight line.
- ☞ Circle : Used to draw a circle.
- ☞ Rectangle : Used to draw various rectangles.

6. Eraser 

- ☞ Normal : Each use will erase the thickness of its size. If pen is used in conjunction with the eraser, it can be used as a board eraser.
- ☞ Section : Selected section can be erased.
- ☞ Erase All : Complete board will be erased.



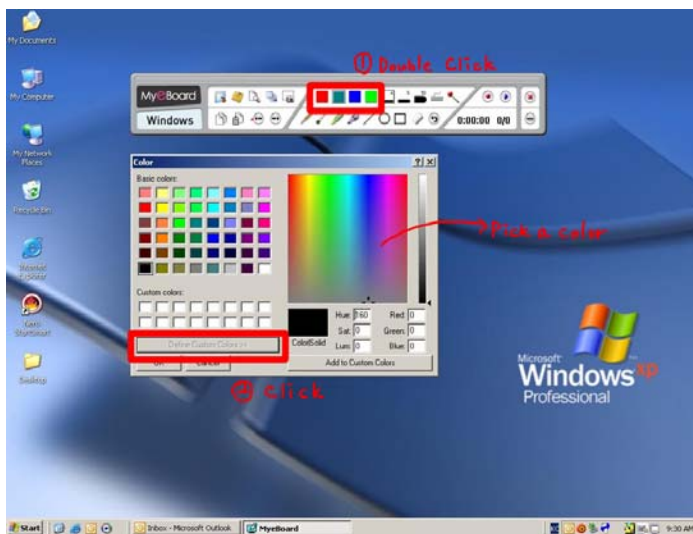
7. Undo 

Individual (latest) actions can be cancelled.

(4) MyeBoard's Color and thickness control menu

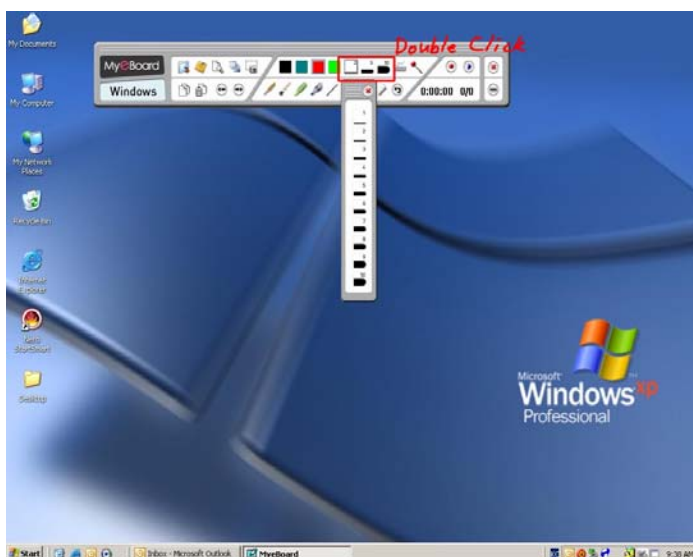
1. Color Control 

There are four basic colors provided for the pen and custom colors can be selected by double clicking on the predefined colors.




2. Thickness control 

Default display for the pen thickness is three. There are 10 different levels of thickness to choose from and can be selected by double clicking on a set thickness.




(5) Moving/Adding/Removing Board page


1. Previous Page

Previous page will be displayed when  icon is clicked.


2. Next Page

Next page will be displayed when  icon is clicked.

3. Add


New page will be created when  icon is clicked.

4. Remove

Current page will be removed when  icon is clicked.


(6) Miscellaneous Menu

1. Pointer

When  icon is clicked, pointer is activated and can be for emphasis during a presentation.



When icon is clicked again, the pointer is de-activated.

2. Virtual Keyboard

When  icon is selected, a virtual keyboard will be displayed and used to input texts. The

virtual keyboard can be removed by clicking on the  icon.


3. Move/Relocate Menu

By clicking the  icon the menu bar can be relocated to a desired location. If  icon is selected again, the menu will be returned to the default location.

4. Record

When  icon is clicked, audio will start recording in accordance with the presentation.

Selecting the icon again will halt the recording.

 To use the recording feature, file name with meb extension must be given before the start of recording.

5. Play

When  icon is clicked, currently loaded meb file will be played.

6. Record Time Indicator

This indicates the length of the recorded file.

0:00:00


This indicates the length of the playing time.

7. Page Indicator

Indicates location of the current page out of total number of pages.

2/2

8. Terminate Program

When  icon is clicked, MyeBoard will be closed.

AYSoft Inc.

502, HanaTechnoville B/D, 22-35 Sinsu-dong, Mapo-gu, Seoul, Korea

Phone : +82-2-706-6163

Fax : +82-2-706-6167

Homepage : <http://www.aysoft.co.kr>